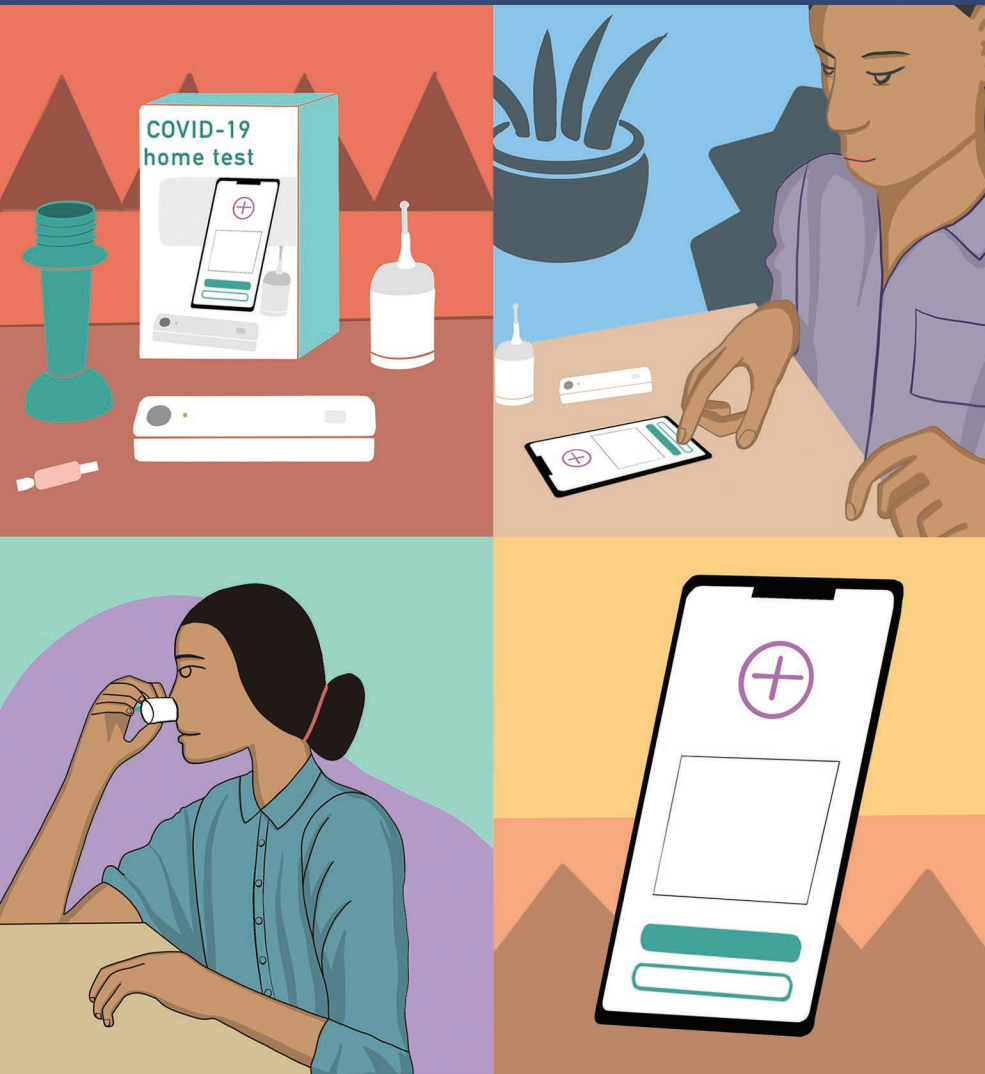


# PROTECTION

COVID-19 testing remains an important way to prevent the spread of the coronavirus and to protect our loved ones.

## ELLUME AT-HOME COVID-19 TESTING AVAILABLE



The ellume COVID-19 Home Test is a product designed to:

- Test for COVID-19 at home in 15 minutes
- Be used with your smartphone
- Be used on individuals 2+ years and older with or without symptoms
- Offer early COVID-19 detection so that those affected can self-isolate and seek medical care to prevent the spread of the disease

Scan the QR code below to learn more about Ellume:

Contact your local IHS, tribal, or urban Indian health care facility for more information.

